

## HIGH SECURITY FIXED SHALLOW MOUNT BOLLARD

Model: FHCM50



The FHCM50 Fixed Shallow Mount Bollard was designed to protect the perimeter of the protected area. Offers maximum security against unauthorized wheeled vehicles while enabling unhindered pedestrian access. These robust bollards are crash-tested to internationally accepted standards and feature shallow foundations for easy installation.

**Crash-tested According To**

**Accredited by**



# HIGH SECURITY FIXED SHALLOW MOUNT BOLLARD

Model: FHCM50

## Technical Specs

Model	FHCM50
Crash Rating	ASTM F2656/2656M-23, M50, P1
Impact Resistance Energy (J)	1697
Diameter (mm)	355
Height (mm)	1100
Installation Depth (mm)	400

## Features

- Crash-tested and certified according to ASTM F2656/ F2656M-23.
- Shallow installation depth: 400mm (including 100mm road covering).
- Blocking height: 1100mm
- Hot Dip galvanized (ASTM A123) anti-corrosion protection coating with epoxy top coating.

## Design

Blocking bollard(s) with base supports for shallow mount installation.

The bollard system can be adapted on-site for corner applications.

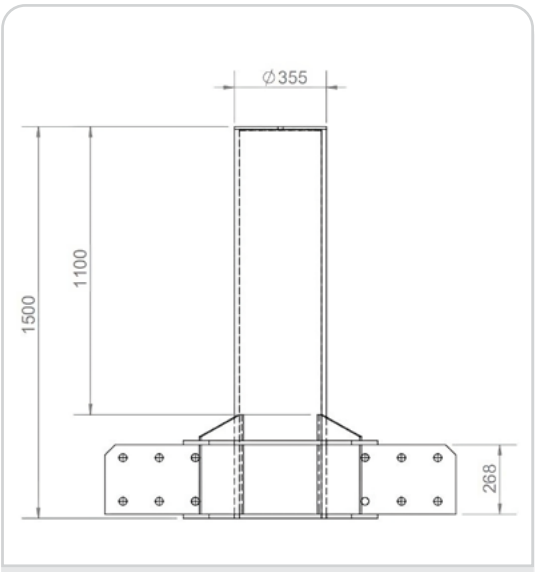
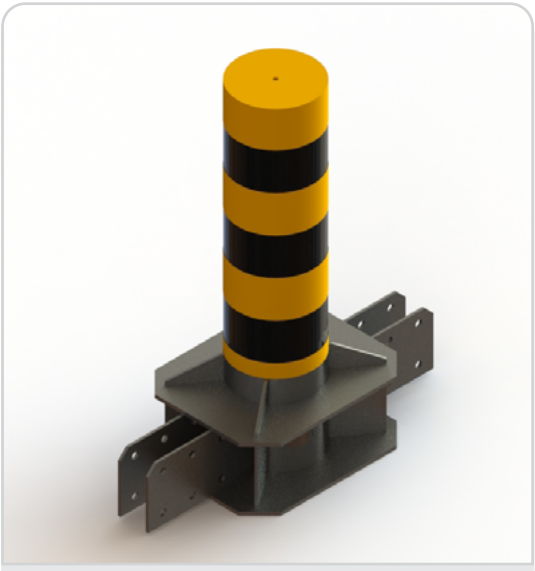
## Impact Test

Crash test certified according to ASTM F2656/ F2656-23-P1

ASTM F2656: C750-80 km/h.

## Blocking Element

Diameter: 355 mm, optional: screwed on steel top plate in galvanized finish or coated in the color of the blocking element.



# HIGH SECURITY FIXED SHALLOW MOUNT BOLLARD

Model: FHCM50

## Blocking Height

Above Ground: 1100mm

## Post Spacing

1370mm

## Material

- Galvanized pipe (any RAL upon request) protection against corrosion
- Stainless steel sleeve/casing upon request.

## Foundation Size

- 4400 x 2500 x 400 mm (triple unit)
- Bollards are installed at a depth of 400 mm only, with less foundation depth.

## Options

Bollard top lighting, red, white, or yellow Stainless-steel sleeve with screwed-on or welded stainless steel top plate.

## Installation Area

- Governmental Institutions
- Military Bases
- Nuclear Power Plants
- Production sites (Industrial Plants)
- Financial institutions
- Airport Premises
- Sport Complexes
- Recreation areas
- Urban areas
- Education Institutions, etc.

## Color (Optional)

Any RAL color or DB color.

