



## GENERAL OVERVIEW OF CUSTOM-BUILT BREATHING AIR TRAILER

Breathing air trailers are designed to provide a combination of services for remote site emergency and non-emergency operations. These units are equipped with various sizes of air compressors, a 4-to-12 air cylinder storage system, and air cascade or air compressor control panels with SCBA enclosed filling stations. The entire package meets or exceeds NFPA standards.

Air trailers and bodies are custom built to each customer's exact dimension requirements, from small to large. Generators (6 to 30 kW) can be added, along with telescopic floodlights and light towers. All units have ample compartment space for storing firefighting equipment, spare SCBA cylinders, and SCBA or SCUBA air packs.

Define your SCBA fill rate and Fire & Hazard Control (FHC) engineers will design a breathing air trailer specifically to meet your needs.

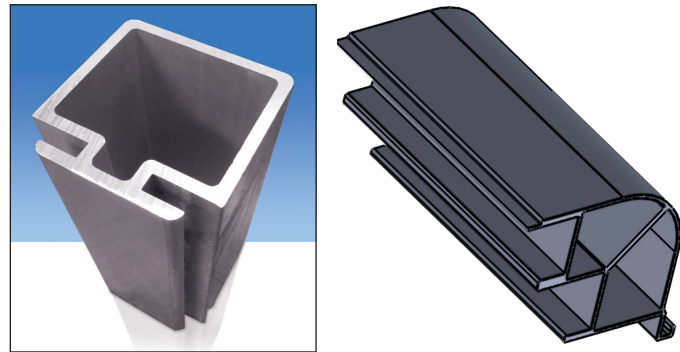
## ***BREATHING AIR TRAILER***



# Breathing Air Trailer

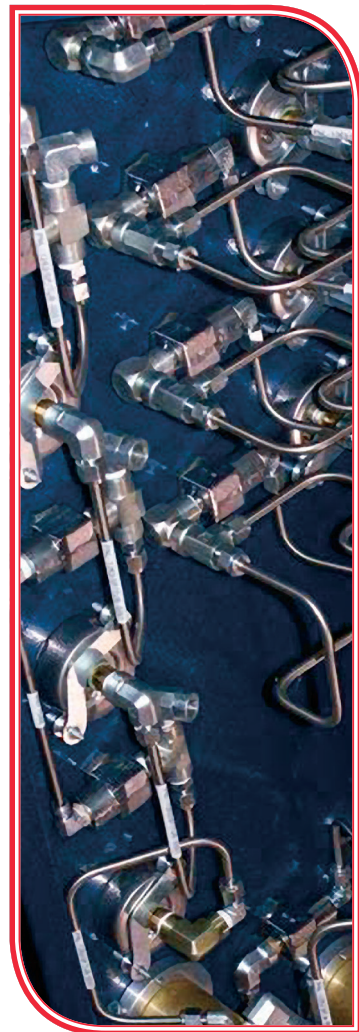
## CUSTOM-BUILT TRAILER CONSTRUCTION

- Trailer and Body Engineered In 4 to 8 m Lengths, with Various Body Width and Vertical Height
- All Steel Welded Trailer Sub-Frame Fabrication
- Various Trailer GVWR Carrying Capacities
- All Welded Body Construction
- Heavy Aluminum Extrusions and Sheet Metal Panels
- Roll-Up Shutter Compartment Doors



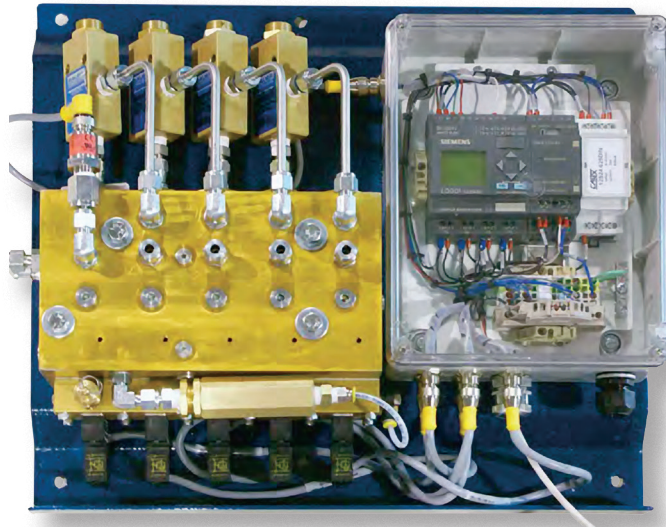
## PIPING AND HOSES

- All Stainless Steel Piping and Connections
- Tested To NFPA Standards
- All Valves, Pressure Regulators, and Gauges constructed to "World Class" Standards



## ELECTRICAL INSTALLATION

- Compliance to NFPA #70 Standards
- Weatherproof Electrical Junction Boxes
- Wiring Enclosed in Electrical Conduits



## SCBA STORAGE

- Steel Enclosures and Securement Devices for SCBA storage cases
- Fire Equipment Storage on Each Side of Container
- Air Carts and Custom Built Air Manifolds and Hoses

## AIR CYLINDERS STORAGE

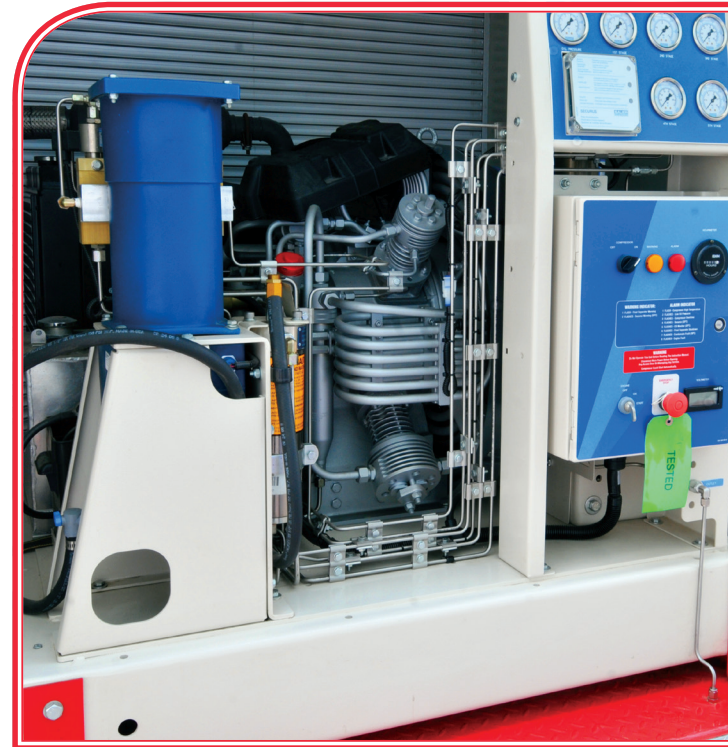
- DOT/EN Steel or ASME Vessels 6,000 PSI/400 Bar
- Vertical or Horizontal Mountings
- Cascade and Bulk Type Storage



# Breathing Air Trailer

## BREATHING AIR COMPRESSORS

- Diesel Driven
- Electrically Driven
- Wide Range of Air Compressors Capacities and SCBA Filling Rates
- CO Monitors, Moisture Detection, and Safety Shut Down Systems
- Various Purification Levels and Duration



## CASCADE AND COMPRESSOR AIR CONTROL PANELS

- Automatic or Manual SCBA Filling
- Exterior or Interior Filling Stations
- Engineered Systems for All Types of Hazards or Conditions in the Fire Service
- Training, Maintenance, and Service Support Operations and Staff

## SCBA ENCLOSED RE-FILLING STATIONS

- 1, 2, or 3 SCBA Filling Capability
- Meets Applicable NFPA Standards

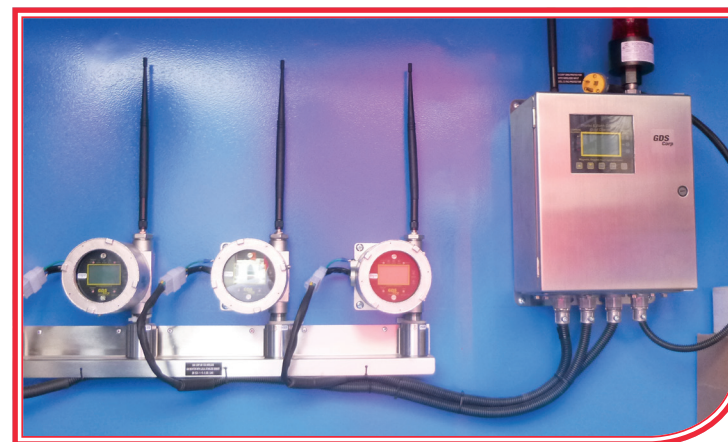


## GAS DETECTION EQUIPMENT

The function of these units is to detect the presence of any hazardous gases that may exist in the work area. The equipment is composed of a 4-channel main control unit with a wireless connection to three gas detectors.

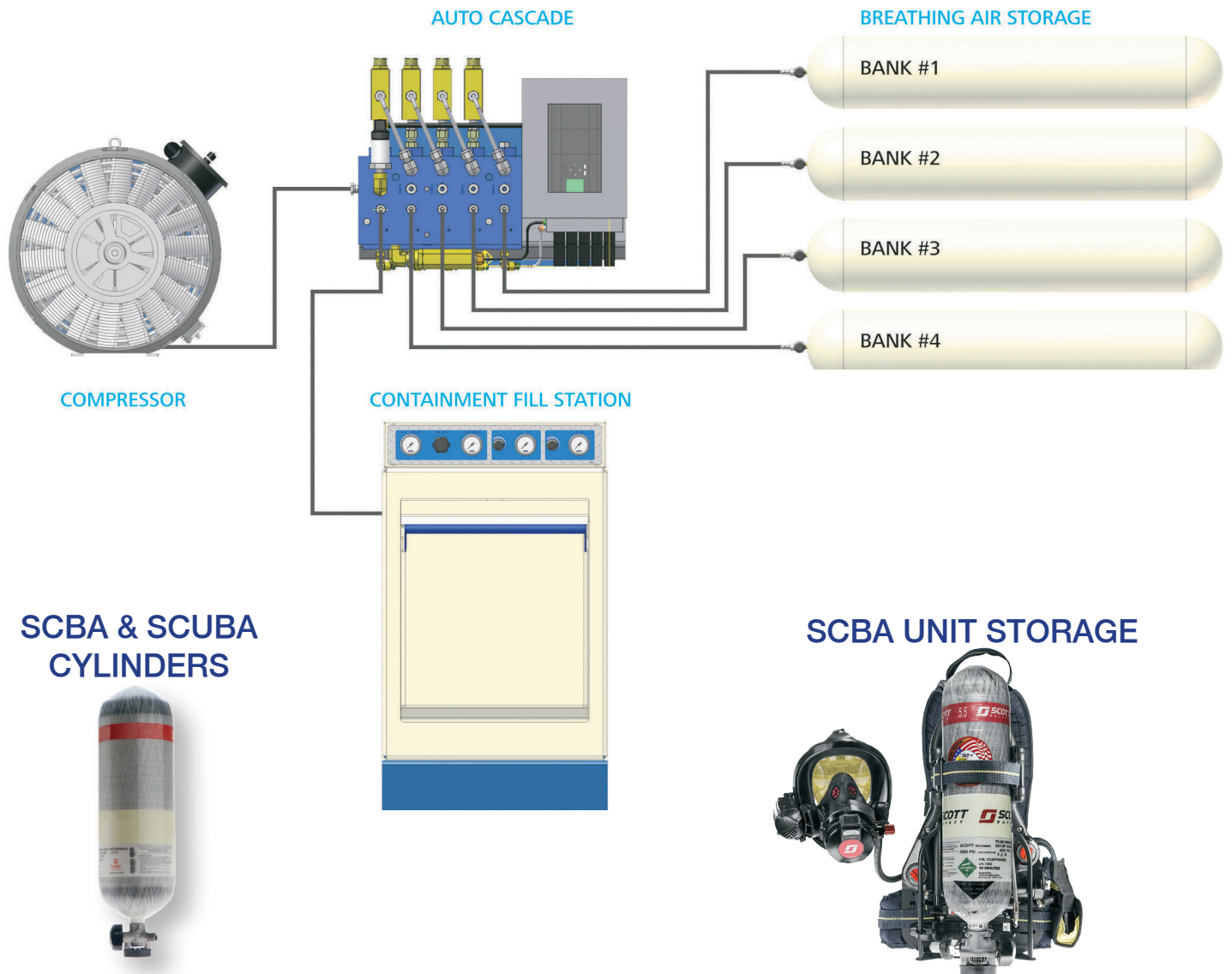
Two sensor ports are calibrated for detection of H<sub>2</sub>S gas. When the gas is detected, audio and visual alarms are automatically generated in a safe location, where safety actions are directed.

The unit is equipped with a 220 volt AC shore power connection. A single gas detector unit is connected to a gas sensor. Additional detector/sensor units are available on request.





# Breathing Air Trailer



## HOSE REEL OPTIONS

- Low and High Pressure Breathing Air Reels
- Low Pressure Utility Air Reels
- Low and High Pressure Hose



## PRODUCT SUPPORT

- Engineered Systems for All Types of Hazards or Conditions
- Unmatched Firefighter Training and Instructions
- Maintenance, Parts, and Technical Service Support

**Custom Design Services  
Available for Specific  
Purchaser Requirements**